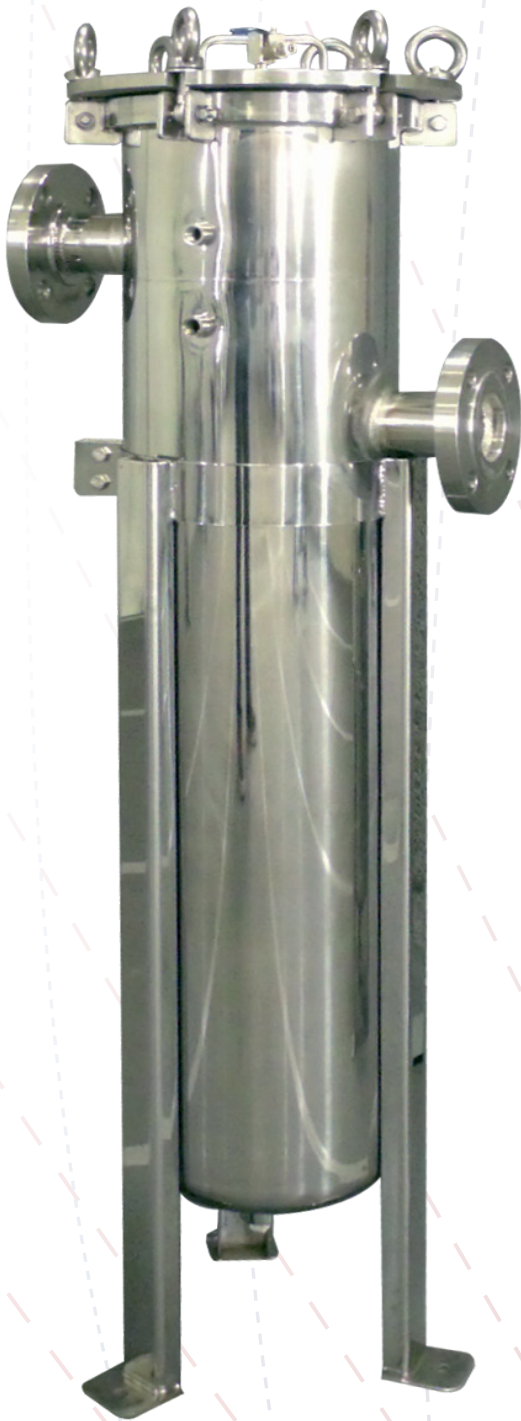


HIGH QUALITY  
CUSTOMIZED  
UPGRADE

# STAINLESS STEEL FILTRATION UNIT

## BUILT TO OUTLAST

- Electroplated 304 Stainless Steel
- Low Pressure Drop, High Strength 35psi Max Pressure Differential Stainless Steel Basket
- EPDM Seals
- 2" Flanged Connections
- Heavy Duty 150psi Construction
- 10°F - 300°F Operating Temperature
- #1 & #2 Size Filter Housings Available
- Adjustable Height Stainless Steel Legs
- Safe 6 Lug Bolt Lid Design



AN IDEAL FIT FOR YOUR SOLIDS SEPARATION SYSTEMS

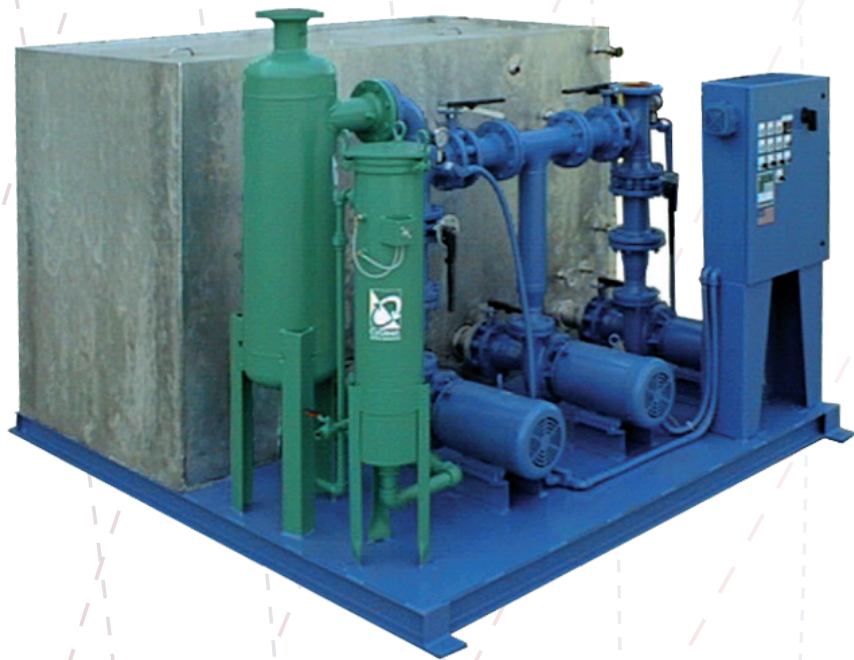


Our single bag housing ensures positive seal and media compression, eliminating the potential for bypass.

With an all stainless steel design any type of fluid can be used without fear of corrosion.



CYCLEAN SYSTEMS EXCLUSIVELY  
USE OUR STAINLESS STEEL BAG  
FILTERS



ALSO AVAILABLE

SOLANUS QUENCH OIL COOLERS • CYCLEAN CENTRIFUGAL SEPARATORS



📍 575 South Glaspe Street, Oxford, MI 48371

☎ 1-800-525-8173

🌐 [www.drycoolers.com](http://www.drycoolers.com)

📞 1-248-969-3401

✉ [info@drycoolers.com](mailto:info@drycoolers.com)

**BULLETIN**  
**SSF - 1405**