

LS  
SERIES

# SPOT•COOLER CLEANLOOP COMPACT COOLER



## ESSENTIAL DETAILS

- Zero Water Usage
- Eliminates Fouling & Corrosion
- Greatly Extends Equipment Life
- Compact Unitized Design
- Pre-Piped and Wired
- Quiet Operation

## STANDARD FEATURES

- Centrifugal Circulating Pump
- Direct Drive Propeller Cooling Fan
- Three Phase 60hz 230/460 Volt
- High Efficiency Induced Draft Air Cooling
- Copper Tubes, Aluminum Fins
- Polypropylene Expansion Tank
- Pressure Gauge
- Sight Flow Indicator
- Make-up Water Valve
- Heavy Gauge Galvanized Cabinet
- Removable and Cleanable Air Filter

## Engineered for:

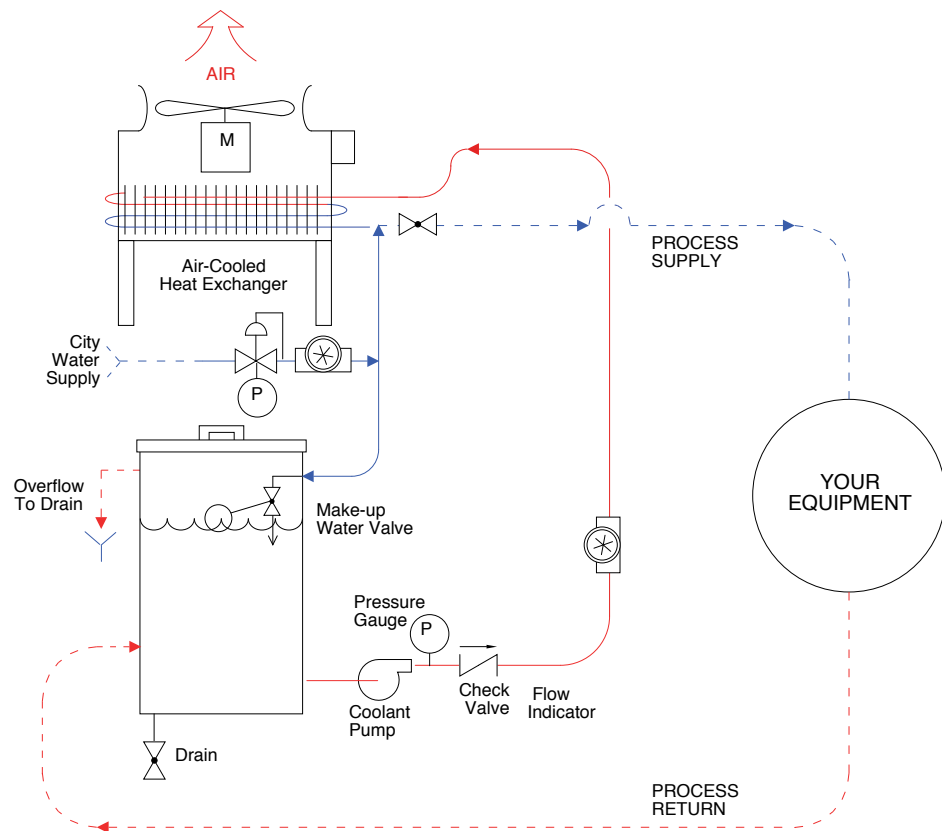
**Atmosphere Furnaces Treating**  
Fan Bearings, Roller Hearths,  
Jackets, Seals, Exchangers

Test Cells

Dynamometer Cooling

The **Spot•Cooler** is a compact, CLEANLOOP cooling system that will protect your equipment from scale build up and prevent premature failure. Using an open loop water system leads dissolved minerals in cooling water to come out of solution on hot metal surfaces forming mineral scale. These deposits cause equipment to run hot, accelerate corrosion, and can completely clog cooling passages.

## PROCESS DIAGRAM WITH CITY WATER BACKUP



## NEVER GET CAUGHT WITHOUT COOLING

The city water backup option provides emergency cooling during a loss of flow or loss of electrical power. This insures safe operation on furnace fan bearings, seals, and other temperature sensitive equipment. The option includes a prepped automatic city water supply valve, overflow, and sight flow indicator.

Our Spot•Coolers have options for fan cycling, air and water filtration, and flow, level, and pressure alarms.

## RAPID PAYBACK NO FOULING, CORROSION, OR WATER USAGE

## TYPICAL DIMENSIONS & CAPACITIES

Model	Capacity		Pump Motor (HP)	Fans		Inlet / Outlet Size NPT (Inches)	Dimensions L x W x H (Inches)	Weight (lbs)
	GPM	BTU/hr		Quantity	HP			
LS-500	10	50,000	3/4	1	1	1 / 1.25	54 x 34 x 79	975
LS-1000	20	80,000	1 1/2	1	1	1.25 / 1.5	54 x 34 x 79	1000
LS-2000	40	190,000	2	2	1	2 / 2	97 x 34 x 79	1500

Other flows and dimensions are available. Ask your Dry Coolers sales rep to find the right system for your needs.

All models are 230/460V/3Ø. Ratings are based upon water supplied to process at 105°F with 90°F ambient. Dimensions are subject to change. Consult factory for certified drawings and cooling capacities at other flow and temperature conditions.

## FIND OUT ABOUT OUR OTHER QUALITY DRY COOLERS PRODUCTS

SOLANUS QUENCH OIL COOLERS • REPOTHERM WASTE HEAT RECOVERY • CYCLEAN FILTRATION



575 South Glaspie Street, Oxford, MI 48371

1-800-525-8173

1-248-969-3401

www.drycoolers.com

info@drycoolers.com

BULLETIN  
LS - 1411