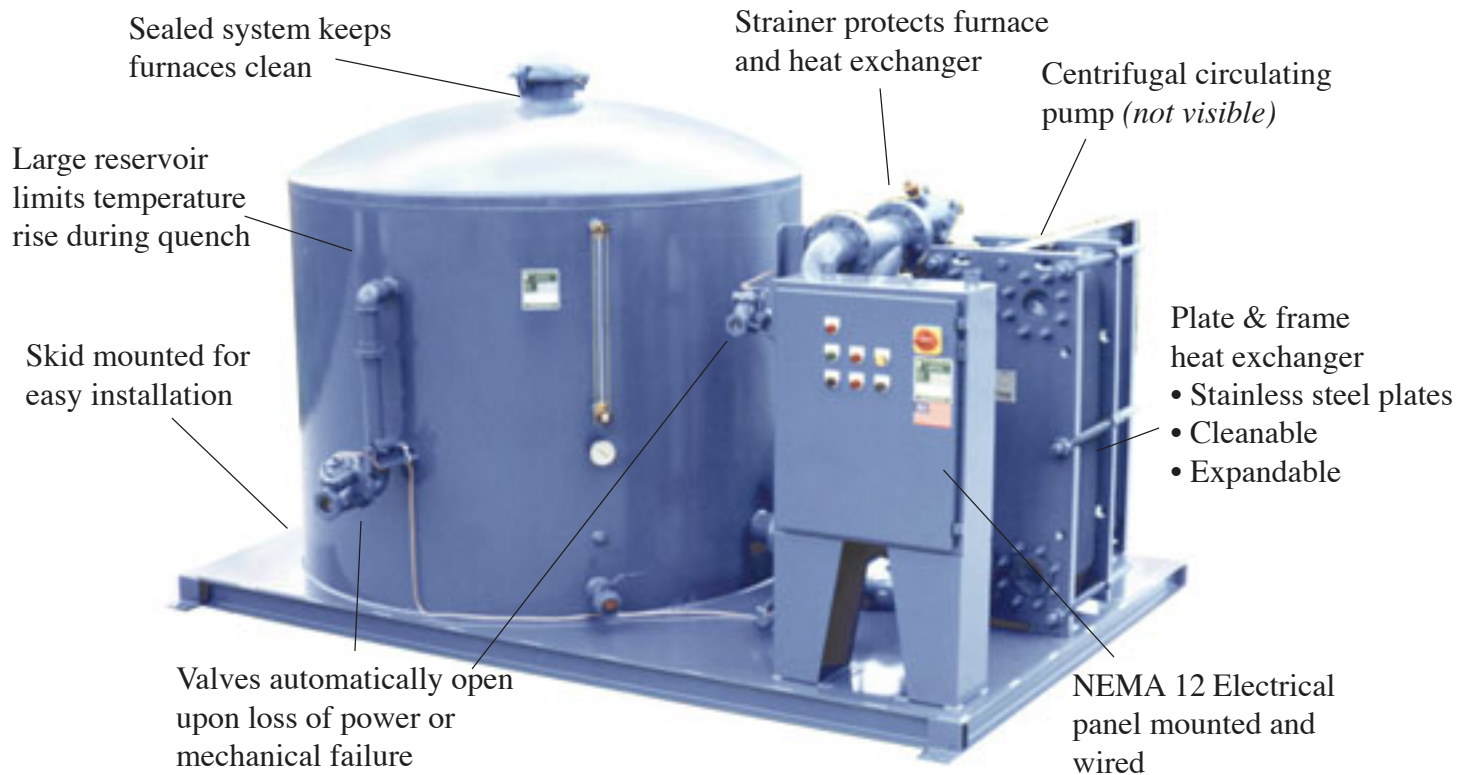


# Water Cooled Closed Loop System for Vacuum Furnaces

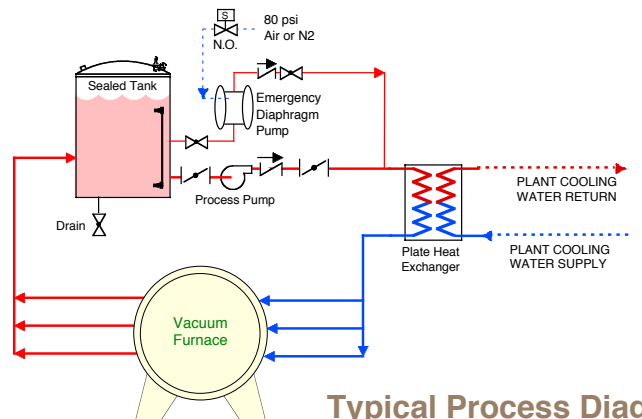
## Aqua-Vent<sup>®</sup>

### VSX Series

- Isolates furnace from raw cooling tower water
- Protects furnaces from scaling and corrosion
- 5°F approach to cooling tower temperature

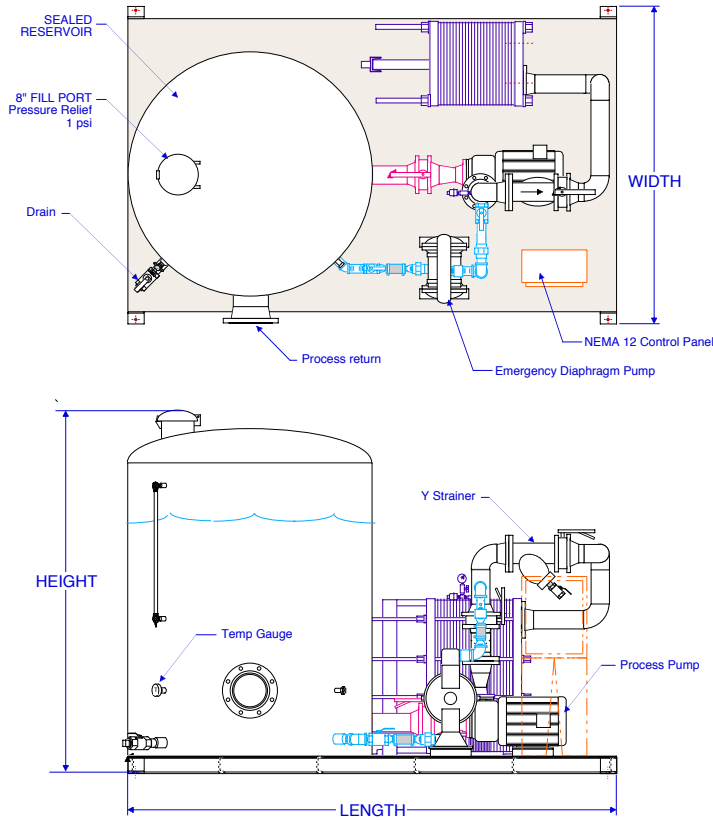


**Cleanable plate & frame heat exchanger**  
**Large reservoir for rapid quenches**  
**Automatic city water back up cooling**



Typical Process Diagram

# Closed Loop Systems Protect Furnaces



## VSX Series

### More Quality Features:

- Liquid level sight glass
- Fused disconnect
- Pilot lights for pumps and alarms
- Optional temperature control valve to minimize cooling tower water consumption

## CAPACITIES and DIMENSIONS

Note: Btu/hr = MBH x 1000. Based on 5°F approach to customer supplied cooling water.

Dimensions are subject to change. Consult factory for certified drawings. Consult factory for larger systems which are available upon request.

Model No.	Capacity		Process Pump HP	Tank Gal	Piping Size	Skid Dimensions LxWxH (ft)
	GPM	MBH				
VSX-50	50	300	5	300	2"	6' x 4' x 6'
VSX-100	100	600	7.5	500	2-1/2"	8' x 4' x 7'
VSX-150	150	900	7.5	900	3"	8' x 5' x 7'
VSX-200	200	1,125	10	900	4"	8' x 5' x 7'
VSX-300	300	1,650	15	1,500	4"	8' x 6' x 8'
VSX-400	400	2,175	20	1,500	6"	8' x 6' x 8'
VSX-500	500	2,850	25	2,000	6"	10' x 8' x 8'
VSX-600	600	3,225	30	2,600	6"	10' x 8' x 8'
VSX-700	700	3,900	30	2,600	6"	10' x 8' x 8'



3232 Adventure Lane  
Oxford, MI 48371

**1-800-525-8173**

Michigan (248) 969-3400

Fax (248) 969-3401

www.drycoolers.com

### ALSO AVAILABLE from Dry Coolers

Air cooled heat exchangers

Air and water cooled refrigerant chillers

CyClean™ filtration systems

Complete systems are pre-engineered and pre-packaged.

Take the headaches out of your process cooling while saving money on water and sewer costs.